

GIRLS' SWEET 16 CHAMPIONSHIP

First Round

**COVINGTON
HOLMES**

vs.

**WOODFORD
COUNTY**

March 25, 1993

Official Boxscore *** FINAL ***

Date: 03-25-93 Site:GIRLS STATE TOURNEY GM 6

VISITORS (Last Name, First)

NO.	WOODFORD COUNTY	Tot FG		3-POINT		FT	FTA	Rebounds			PF	TP	A	TO	BLK	S	TIME		
		FG	FGA	FG	FGA			OFF	DEF	TOT									
20	REDMON, AMY	5	7	3	4	5	9	2	4	6	4	18	3	3	1	2	31:52		
24	HILL, ANDREA	2	4	2	4	1	4	0	3	3	4	7	2	1	0	3	21:41		
34	WASHER, TAMMY	8	13	0	0	2	5	2	4	6	3	18	4	0	2	2	27:52		
12	RAGLIN, SHAWNA	2	9	1	5	5	6	0	1	1	3	10	5	5	0	0	23:49		
13	WILSON, VERNA	2	7	1	3	0	0	1	1	2	2	5	2	3	0	1	19:17		
55	FIELDS, TIFFANEE	1	4	0	0	0	1	3	2	5	0	2	2	0	0	1	22:46		
22	WATSON, AMY	0	2	0	0	0	0	2	0	2	0	0	1	3	0	0	8:03		
54	SULLINS, SUSAN	0	2	0	0	0	0	1	0	1	0	0	0	0	0	1	4:00		
33	HUGHES, PATTY	0	0	0	0	0	0	0	0	0	0	0	0	0	0	0	0: 8		
14	REED, CARRIE	0	0	0	0	0	0	0	0	0	0	0	0	0	0	0	0: 8		
53	GAINES, HEATHER	0	0	0	0	0	0	0	0	0	0	0	0	0	0	0	0: 8		
44	HARTLEY, CRYSTAL	0	0	0	0	0	0	0	0	0	0	0	0	0	0	0	0: 8		
10	HOPPER, LUCY	0	0	0	0	0	0	0	0	0	0	0	0	0	0	0	0: 8		
TEAM REBOUNDS (INCLUDED IN TOTALS)								1											
TOTALS		20	48	7	16	13	25	12	15	27	16	60	19	15	3	10	160		
TOTAL FG 1st HALF 6/14		42.9%		2nd HALF 14/34		41.2% GAME		20/48		41.7%		DEADBALL							
3-POINT FG 1st HALF 3/9		33.3%		2nd HALF 4/7		57.1% GAME		7/16		43.8%		REBOUNDS		4					
FREE THROWS 1st HALF 0/0		0.0%		2nd HALF 13/25		52.0% GAME		13/25		52.0%									

HOME (Last Name, First)

NO.	HOLMES	Tot FG		3-POINT		FT	FTA	Rebounds			PF	TP	A	TO	BLK	S	TIME		
		FG	FGA	FG	FGA			OFF	DEF	TOT									
23	LEWIS, NIKKI	4	14	0	0	3	5	3	8	11	5	11	2	8	1	1	30:20		
33	TEVIS, LAVETTA	2	6	0	0	0	0	2	10	12	3	4	2	0	0	1	31:43		
40	MCCARTHY, ALISON	5	12	0	0	1	2	9	5	14	4	11	2	5	1	0	31:40		
11	GRIFFIN, AMY	3	8	2	5	3	4	1	1	2	4	11	2	5	0	4	31:43		
20	JAMES, SARAH	6	12	2	3	0	2	4	0	4	4	14	0	4	0	2	31:43		
15	PINKERTON, M.	0	0	0	0	0	0	0	0	0	0	0	0	0	0	0	1:23		
55	DANDRIDGE, D.	0	0	0	0	0	0	0	0	0	0	0	0	0	0	0	0: 3		
14	SOARD, JENNIFER	0	0	0	0	0	0	0	0	0	0	0	0	0	0	0	0:17		
10	THEISEN, ERIN	0	0	0	0	0	0	0	0	0	0	0	0	0	0	0	0:17		
22	MCDONALD, KATIE	0	0	0	0	0	0	0	0	0	0	0	0	0	0	0	0:17		
24	TURNER, TREVCE	0	0	0	0	0	0	0	0	0	0	0	0	0	0	0	0:17		
21	BRINKMAN, NICOLE	0	0	0	0	0	0	0	0	0	0	0	0	0	0	0	0:17		
TEAM REBOUNDS (INCLUDED IN TOTALS)								19											
TOTALS		20	52	4	8	7	13	19	24	43	20	51	8	22	2	8	160		
TOTAL FG 1st HALF 4/10		40.0%		2nd HALF 16/42		38.1% GAME		20/52		38.5%		DEADBALL							
3-POINT FG 1st HALF 1/1		100.0%		2nd HALF 3/7		42.9% GAME		4/8		50.0%		REBOUNDS		4					
FREE THROWS 1st HALF 3/4		75.0%		2nd HALF 4/9		44.4% GAME		7/13		53.8%									

OFFICIALS: LAURA PETRIE, STEVE BAUER, ALT.-M. CAMACHO
 Technicals: None

		SCORE BY PERIODS			
WOODFORD COUNTY		15	9	18	18 = 60
HOLMES		12	17	14	8 = 51

Attendance: 4,070

COMMENTS: POINTS OFF TURNOVERS

WOODFORD COUNTY 17 HOLMES

19 WOODFORD COUNTY SECOND CHANCE POINTS

16 HOLMES

21

Produced by the KHSAA Sweet Sixteen Stat Crew with FINAL III - a Product of LEXICON SPORTS™

WOODFORD COUNTY "LADY JACKETS" vs HOLMES "LADY BULLDOGS"
2nd Half Play by Play

Tip off at 2:30 p.m. on 03/25/93 at GIRLS STATE TOURNEY GM 6
Produced by the KHSAA Sweet Sixteen Stat Crew with FINAL III - a Product of LEXICON SPORTS

PAGE : 2

HOLMES			WOODFORD COUNTY		
Player	Team		Time	Score	Player Team
GRIFFIN, AMY, JAMES, SARAH, LEWIS, NIKKI, TEVIS, LAVETTA, McCARTHY, ALISON			RAGLIN, SHAWNA, FIELDS, TIFFANEE, REDMON, AMY, HILL, ANDREA, WASHER, TAMMY		
Ball to LADY BULLDOGS			4 7:30	43-44*	17 ft Left Angle Jump shot by FIELDS, TIFFANEE Assist by HILL, ANDREA 1-2 50.0% 18-41 43.9% 2 16
3	6	Foul on TEVIS, LAVETTA	4 6:37		
			4 6:37	43-46*	RAGLIN, SHAWNA, 2 Free Throws made both 2-2 100% 4-9 44.4%
			4 5:35	43-48*	Turnaround Layup by RAGLIN, SHAWNA Assist by WASHER, TAMMY 2-7 28.5% 19-43 44.1% 4 17
3	7	Foul on GRIFFIN, AMY	4 5:10		
REB: 32 A: 7 BLK: 2 TO: 17 PF: 7 S: 8 FT: 6-11 54.5% FG: 17-42 40.4%			REB: 21 A: 17 BLK: 1 TO: 12 PF: 3 S: 8 FT: 4-9 44.4% FG: 19-43 44.1%		
No. 1 HOLMES T I M E - O U T			No. 2 WOODFORD COUNTY T I M E - O U T		
5-8	62.5% 18-43 41.8%	3 pt 24 ft Left Side Jump shot by JAMES, SARAH Assist by LEWIS, NIKKI	4 5:10	43-49*	RAGLIN, SHAWNA, 2 Free Throws made 1st missed 2nd 3-4 75.0% 5-11 45.4%
2	8		4 4:51	*46-49	
3	8	Foul on McCARTHY, ALISON	4 4:35	46-52*	3 pt 24 ft Left Angle Jump shot by REDMON, AMY Assist by RAGLIN, SHAWNA 5-7 71.4% 20-44 45.4% 5 18
			4 2:47		
			4 2:47	46-54*	REDMON, AMY, 2 Free Throws made both 2-2 100% 7-13 53.8%
			4 2:40		Foul on HILL, ANDREA 4 4
2-6	33.3% 19-47 40.4%	4 ft Lane Jump shot by TEVIS, LAVETTA	4 2:04	*48-54	
4	9	Foul on GRIFFIN, AMY	4 1:57		Player Control Foul on REDMON, AMY 3 5
			4 1:27		
			4 1:27	48-55*	REDMON, AMY, 1 & Bonus made 1st missed 2nd 3-4 75.0% 8-15 53.3%
6-12	50.0% 20-50 40.0%	6 ft Lane Driving by JAMES, SARAH	4 1:24	*50-55	
			4 1:01		Foul on REDMON, AMY 4 6
REB: 40 A: 8 BLK: 2 TO: 22 PF: 9 S: 8 FT: 6-11 54.5% FG: 20-50 40.0%			REB: 24 A: 18 BLK: 2 TO: 15 PF: 6 S: 10 FT: 8-15 53.3% FG: 20-48 41.6%		
T I M E - O U T			T I M E - O U T		
3	10	Foul on JAMES, SARAH	4 0:58		
			4 0:55		
			4 0:55	50-56*	REDMON, AMY, 2 Free Throws missed 1st made 2nd 4-6 66.6% 9-17 52.9%
4	11	Foul on McCARTHY, ALISON	4 0:38		
			4 0:38	50-57*	HILL, ANDREA, 1 & Bonus made 1st missed 2nd 1-4 25.0% 10-19 52.6%
			4 0:25		Foul on WASHER, TAMMY 3 7
1-2	50.0% 7-13 53.8%	McCARTHY, ALISON, 2 Free Throws missed 1st made 2nd	4 0:25	*51-57	
4	12	Foul on LEWIS, NIKKI	4 0:25		
			4 0:25		FIELDS, TIFFANEE, 1 & Bonus missed 1st 0-1 00.0% 10-20 50.0%
4	13	Foul on JAMES, SARAH	4 0:21		
			4 0:21	51-58*	REDMON, AMY, 1 & Bonus made 1st missed 2nd 5-8 62.5% 11-22 50.0%
5	14	Foul on LEWIS, NIKKI	4 0:17		
Subs In: SOARD, JENNIFER, THEISEN, ERIN, McDONALD, KATIE, TURNER, TREVECE,					
BRINKMAN, NICOLE					
Out: GRIFFIN, AMY, JAMES, SARAH, LEWIS, NIKKI, TEVIS, LAVETTA, McCARTHY, ALISON					
			4 0:08		REDMON, AMY, 1 & Bonus missed 1st Assist by FIELDS, TIFFANEE 5-9 55.5% 11-23 47.8% 2 19
			4 0:08		Subs In: HUGHES, PATTY, REED, CARRIE, GAINES, HEATHER, HARTLEY, CRYSTAL
			Out: REDMON, AMY, HILL, ANDREA, WASHER, TAMMY, FIELDS, TIFFANEE		
			4 0:08	51-60*	RAGLIN, SHAWNA, 1 & Bonus made both 5-8 83.3% 13-25 52.0%
			4 0:08		Sub In: HOPPER, LUCY Out: RAGLIN, SHAWNA

WOODFORD COUNTY "LADY JACKETS" vs HOLMES "LADY BULLDOGS"
2nd Half Play by Play

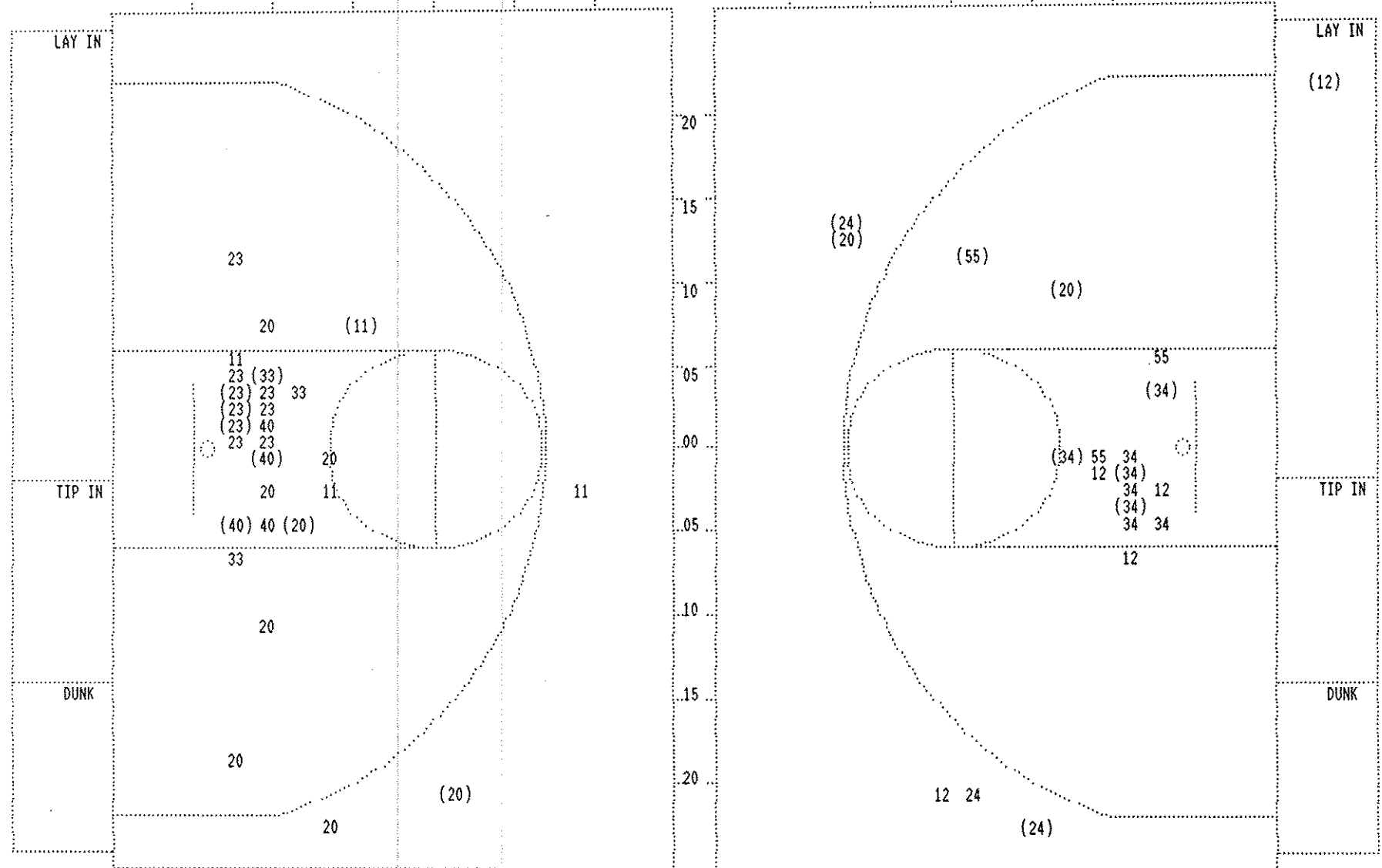
Tip off at 2:30 p.m. on 03/25/93 at GIRLS STATE TOURNEY GM 6
Produced by the KHSAA Sweet Sixteen Stat Crew with FINAL III - a Product of LEXICON

PAGE : 1

Player	Team	HOLMES
GRIFFIN, AMY, JAMES, SARAH, LEWIS, NIKKI, TEVIS, LAVETTA, McCARTHY, ALISON		
2-6	33.3%	12-25 48.0%
3		1
4 ft Lane Driving by LEWIS, NIKKI Foul on LEWIS, NIKKI		
3-5	60.0%	13-26 50.0%
11 ft Right Angle Jump shot by GRIFFIN, AMY		
0-2	00.0%	4-9 44.4%
JAMES, SARAH, 2 Free Throws missed both		
3-8	37.5%	14-31 45.1%
4 ft Lane Follow by LEWIS, NIKKI		
REB: 25 A: 5 BLK: 1 TO: 10 PF: 1 S: 5 FT: 4-9 44.4% FG: 14-31 45.1%		
3-4	75.0%	6-11 54.5%
GRIFFIN, AMY, 2 Free Throws made both		
4-9	44.4%	15-32 46.8%
2		6
2 ft Lane Driving by LEWIS, NIKKI Assist by GRIFFIN, AMY		
4-10	40.0%	16-34 47.0%
1		2
4 ft Lane Follow by McCARTHY, ALISON Foul on McCARTHY, ALISON		
5-12	41.6%	17-38 44.7%
1		7
2		3
2 ft Lane Turnaround by McCARTHY, ALISON Assist by LEWIS, NIKKI Foul on McCARTHY, ALISON		
2		4
Foul on TEVIS, LAVETTA		
2		5
Foul on JAMES, SARAH		

Time	Score	WOODFORD COUNTY	Player	Team
REDMON, AMY, HILL, ANDREA, WASHER, TAMMY, RAGLIN, SHAWNA, WILSON, VERNA				
Ball to LADY JACKETS				
3	7:45	29-26*	12 ft Left Side Jump shot by REDMON, AMY Assist by WASHER, TAMMY	4-6 66.6% 11-28 39.2% 2 11
3	7:23	*31-26		
3	7:06			
3	7:06	31-27*	WASHER, TAMMY, 2 Free Throws missed 1st made 2nd	1-2 50.0% 1-2 50.0%
3	6:55	*33-27		
3	6:38	33-30*	3 pt 23 ft Right Side Jump shot by HILL, ANDREA Assist by REDMON, AMY	1-2 50.0% 12-30 40.0% 3 12
3	6:16		Foul on REDMON, AMY	2 1
3	6:16			
3	5:35		Player Control Foul on RAGLIN, SHAWNA	3 2
3	5:21	*35-30		
3	4:59		Foul on HILL, ANDREA	3 3
3	4:59			
REB: 13 A: 12 BLK: 0 TO: 9 PF: 3 S: 4 FT: 1-2 50.0% FG: 12-31 38.7%				
T I M E - O U T WOODFORD COUNTY No. 1				
3	4:59	*37-30		
3	4:34	37-32*	3 ft Lane Bank by WASHER, TAMMY Assist by RAGLIN, SHAWNA	5-7 71.4% 13-32 40.6% 4 13
3	4:17	*39-32		
3	3:39	*41-32		
3	3:21	41-34*	3 ft Lane Turnaround by WASHER, TAMMY	6-8 75.0% 14-33 42.4%
3	3:20			
3	3:20		Sub In: FIELDS, TIFFANEE Out: WILSON, VERNA	
3	3:20		WASHER, TAMMY, 1 Free Throw missed	1-3 33.3% 1-3 33.3%
3	2:19	41-36*	4 ft Lane Follow by WASHER, TAMMY	7-10 70.0% 15-36 41.6%
3	1:52	*43-36		
3	1:26			
3	1:26	43-37*	WASHER, TAMMY, 2 Free Throws missed 1st made 2nd	2-5 40.0% 2-5 40.0%
3	1:09			
3	1:09		HILL, ANDREA, 2 Free Throws missed both	0-2 00.0% 2-7 28.5%
3	1:03	43-40*	3 pt 24 ft Left Angle Jump shot by HILL, ANDREA Assist by WASHER, TAMMY	2-4 50.0% 16-37 43.2% 3 14
3	0:21	43-42*	6 ft Lane Jump shot by WASHER, TAMMY Assist by FIELDS, TIFFANEE	8-11 72.7% 17-39 43.5% 1 15
3	0:07			

SECOND HALF SHOT CHART Produced by the KHSAA Sweet Sixteen Stat Crew with FINAL III - a Product of LEXICON SPORTS™



HOLMES					
Player					
23 - LEWIS, NIK	3 / 9	33.3%			
33 - TEVIS, LAV	1 / 3	33.3%			
40 - MCCARTHY, A	2 / 4	50.0%			
20 - JAMES, SAR	2 / 8	25.0%			
11 - GRIFFIN, A	1 / 4	25.0%			
Layups	1-9 Ft	10-15 Ft	Over 15 Ft	3 Pointers	Total
	7 / 20	1 / 3	0 / 1	1 / 4	9 / 28
	35.0%	33.3%	0.0%	25.0%	32.1%

WOODFORD COUNTY					
Player					
20 - REDMON, AM	2 / 2	100.0%			
24 - HILL, ANDR	2 / 3	66.6%			
34 - WASHER, TA	4 / 8	50.0%			
12 - RAGLIN, SH	1 / 5	20.0%			
55 - FIELDS, TIF	1 / 3	33.3%			
Layups	1-9 Ft	10-15 Ft	Over 15 Ft	3 Pointers	Total
	1 / 1	4 / 13	1 / 1	1 / 1	3 / 5
	100.0%	30.8%	100.0%	100.0%	60.0%
					10 / 21
					47.6%

Official Boxscore * OFFICIAL FIRST HALF *

Date: 03-25-93 Site:GIRLS STATE TOURNEY GM 6

VISITORS (Last Name, First)

NO.	WOODFORD COUNTY	Tot FG		3-POINT		FT		Rebounds			PF	TP	A	TO	BLK	S	TIME	
		FG	FGA	FG	FGA	FT	FTA	OFF	DEF	TOT								
20	REDMON, AMY	3	5	2	3	0	0	0	1	1	1	8	2	1	0	0	16:00	
24	HILL, ANDREA	0	1	0	1	0	0	0	0	0	2	0	1	0	0	1	5:49	
34	WASHER, TAMMY	4	5	0	0	0	0	0	2	2	2	8	1	0	0	1	12:00	
12	RAGLIN, SHAWNA	1	4	1	4	0	0	0	0	0	2	3	3	0	0	0	7:57	
13	WILSON, VERNA	2	7	1	3	0	0	1	1	2	5	2	3	0	0	1	14:37	
55	FIELDS, TIFFANEE	0	1	0	0	0	0	1	1	2	0	0	0	0	0	0	11:34	
22	WATSON, AMY	0	2	0	0	0	0	2	0	2	0	0	1	3	0	0	8:03	
54	SULLINS, SUSAN	0	2	0	0	0	0	1	0	1	0	0	0	0	0	1	4:00	
TEAM REBOUNDS (INCLUDED IN TOTALS)																		
TOTALS		10	27	4	11	0	0	5	5	10	9	24	10	7	0	4	80	

TOTAL FG	1st HALF	6/14	42.9%	2nd HALF	4/13	30.8%	GAME	10/27	37.0%	DEADBALL	
3-POINT FG	1st HALF	3/9	33.3%	2nd HALF	1/2	50.0%	GAME	4/11	36.4%	REBOUNDS	0
FREE THROWS	1st HALF	0/0	0.0%	2nd HALF	0/0	0.0%	GAME	0/0	0.0%		

HOME (Last Name, First)

NO.	HOLMES	Tot FG		3-POINT		FT		Rebounds			PF	TP	A	TO	BLK	S	TIME	
		FG	FGA	FG	FGA	FT	FTA	OFF	DEF	TOT								
23	LEWIS, NIKKI	1	5	0	0	3	5	1	5	6	2	5	0	3	0	0	14:37	
33	TEVIS, LAVETTA	1	3	0	0	0	0	1	4	5	1	2	2	0	0	0	16:00	
40	MCCARTHY, ALISON	3	8	0	0	0	0	4	2	6	0	6	2	2	1	0	15:57	
11	GRIFFIN, AMY	2	4	2	3	1	2	1	1	2	2	7	1	3	0	4	16:00	
20	JAMES, SARAH	4	4	1	1	0	0	2	0	2	1	9	0	2	0	0	16:00	
15	PINKERTON, M.	0	0	0	0	0	0	0	0	0	0	0	0	0	0	0	1:23	
55	DANDRIDGE, D.	0	0	0	0	0	0	0	0	0	0	0	0	0	0	0	0: 3	
TEAM REBOUNDS (INCLUDED IN TOTALS)																		
TOTALS		11	24	3	4	4	7	9	12	21	6	29	5	10	1	4	80	

TOTAL FG	1st HALF	4/10	40.0%	2nd HALF	7/14	50.0%	GAME	11/24	45.8%	DEADBALL	
3-POINT FG	1st HALF	1/1	100.0%	2nd HALF	2/3	66.7%	GAME	3/4	75.0%	Rebounds	2
FREE THROWS	1st HALF	3/4	75.0%	2nd HALF	1/3	33.3%	GAME	4/7	57.1%		

OFFICIALS: LAURA PETRIE, STEVE BAUER, ALT.-M. CAMACHO
 Technicals: None

SCORE BY PERIODS		
WOODFORD COUNTY	15	9 = 24
HOLMES	12	17 = 29

Attendance: 4,070

COMMENTS: POINTS OFF TURNOVERS
 WOODFORD COUNTY 9 HOLMES

11 WOODFORD COUNTY
 3 HOLMES

14

Player	Team	HOLMES
LEWIS, NIKKI, TEVIS, LAVETTA, McCARTHY, ALISON, GRIFFIN, AMY, JAMES, SARAH		
1-1	100%	1-6 16.6%
1	1	14 ft Left Angle Jump shot by JAMES, SARAH Foul on LEWIS, NIKKI
2-2	100%	2-7 28.5%
1	1	3 pt 22 ft Right Angle Jump shot by JAMES, SARAH Assist by TEVIS, LAVETTA
1-3	33.3%	3-8 37.5%
1	2	2 ft Lane Turnaround by McCARTHY, ALISON Assist by GRIFFIN, AMY
1	2	Foul on GRIFFIN, AMY
2-2	100%	2-2 100%
		LEWIS, NIKKI, 2 Free Throws made both
3-3	100%	4-10 40.0%
1	3	6 ft Left Side Jump shot by JAMES, SARAH Assist by McCARTHY, ALISON
2	3	Foul on LEWIS, NIKKI Sub In: PINKERTON, M. Out: LEWIS, NIKKI
1-2	50.0%	3-4 75.0%
		Sub In: DANDRIDGE, D. Out: McCARTHY, ALISON GRIFFIN, AMY, 2 Free Throws missed 1st made 2nd

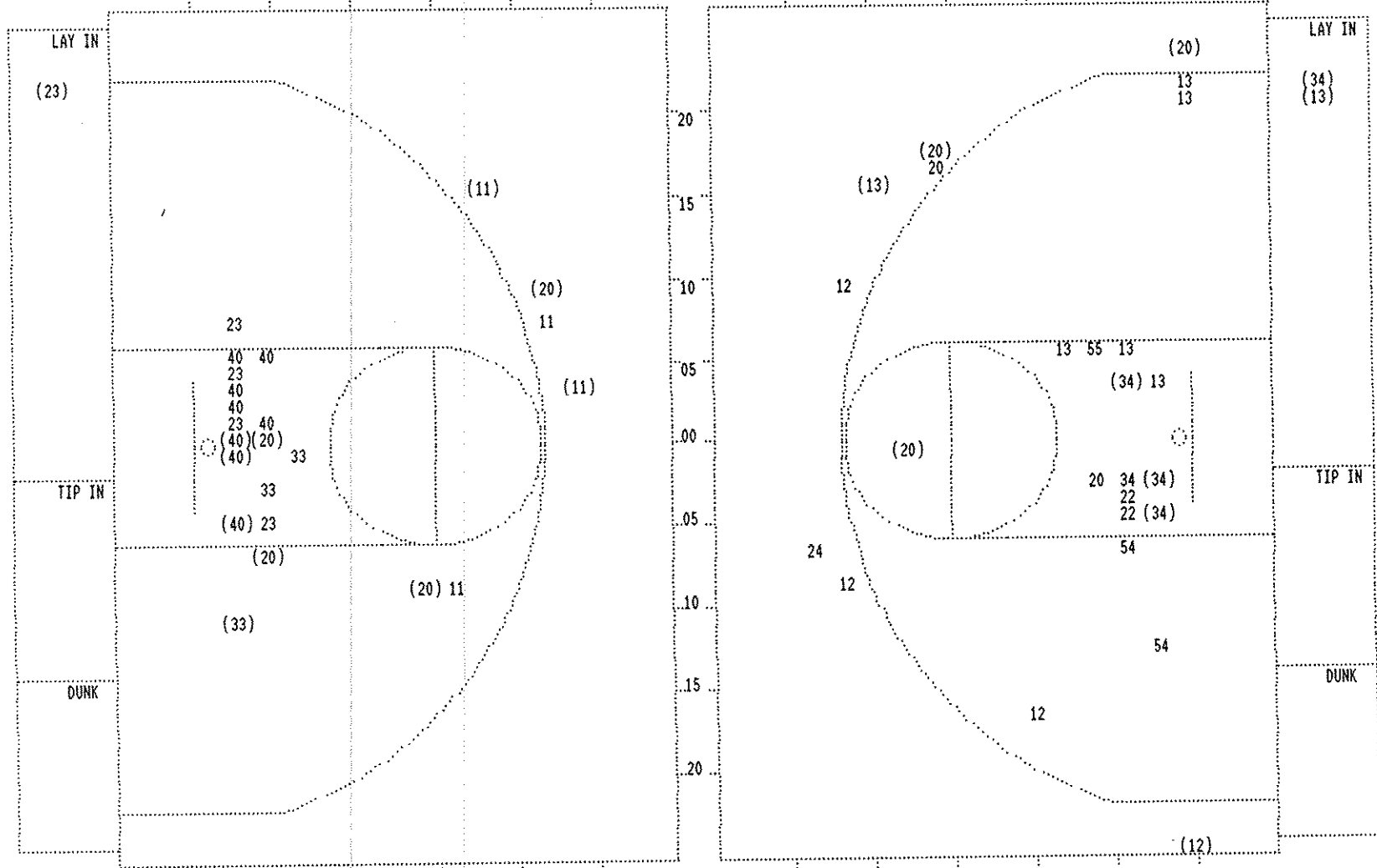
Time	Score	WOODFORD COUNTY	Player	Team
REDMON, AMY, HILL, ANDREA, WASHER, TAMMY, RAGLIN, SHAWNA, WILSON, VERNA				
1 7:44	0-2*	4 ft Lane Turnaround by WASHER, TAMMY	1-1	100% 1-1 100%
		Assist by HILL, ANDREA	1	1
1 7:34		Foul on WILSON, VERNA	1	1
1 7:08	0-4*	Layup Off Fast Break by WASHER, TAMMY	2-2	100% 2-2 100%
		Assist by WILSON, VERNA	1	2
1 5:43		Foul on HILL, ANDREA	1	2
1 5:39	*2-4			
1 5:32				
1 5:32	2-7*	3 pt 24 ft Right Base Line Jump shot by RAGLIN, SHAWNA	1-1	100% 3-5 60.0%
		Assist by WASHER, TAMMY	1	3
1 4:37		Foul on REDMON, AMY	1	3
1 4:26	*5-7			
1 4:07		Foul on WASHER, TAMMY	1	4
1 3:34		Sub In: FIELDS, TIFFANEE Out: WILSON, VERNA		
1 3:34	*7-7			
1 2:39				
1 2:25	7-10*	3 pt 23 ft Left Side Jump shot by REDMON, AMY	1-2	50.0% 4-9 44.4%
		Assist by RAGLIN, SHAWNA	1	4
1 2:11		Foul on HILL, ANDREA	2	5
1 2:11		Sub In: WILSON, VERNA Out: HILL, ANDREA		
1 2:11	*9-10			
1 1:24		Foul on RAGLIN, SHAWNA	1	6
1 1:08	9-12*	Layup Off Fast Break by WILSON, VERNA	1-3	33.3% 5-12 41.6%
		Assist by RAGLIN, SHAWNA	2	5
1 0:49	*11-12			
1 0:24				
1 0:24				
1 0:24	11-15*	3 pt 24 ft Left Base Line Jump shot by REDMON, AMY	2-4	50.0% 6-14 42.8%
		Assist by RAGLIN, SHAWNA	3	6
1 0:03		Foul on RAGLIN, SHAWNA	2	7
1 0:03		Sub In: WATSON, AMY Out: RAGLIN, SHAWNA		
1 0:03				
1 0:03	*12-15			

Player	Team	HOLMES
LEWIS, NIKKI, McCARTHY, ALISON, TEVIS, LAVETTA, GRIFFIN, AMY, JAMES, SARAH		
Ball to LADY BULLDOGS		
2-5	40.0%	5-12 41.6%
		4 ft Lane Follow by McCARTHY, ALISON
3-7	42.8%	6-16 37.5%
		0 ft Lane Follow by McCARTHY, ALISON
3-4	75.0%	4-6 66.6%
		LEWIS, NIKKI, 2 Free Throws missed 1st made 2nd
3-5	60.0%	4-7 57.1%
		LEWIS, NIKKI, 1 & Bonus missed 1st
4-4	100%	7-18 38.8%
		3 ft Lane Follow by JAMES, SARAH
1-3	33.3%	8-20 40.0%
		3 pt 22 ft Straight Away Jump shot by GRIFFIN, AMY
2	4	Assist by McCARTHY, ALISON
1-4	25.0%	9-21 42.8%
		Layup Off Fast Break by LEWIS, NIKKI
2	4	Player Control Foul on GRIFFIN, AMY
1-3	33.3%	10-23 43.4%
		10 ft Left Base Line Jump shot by TEVIS, LAVETTA
1	5	Foul on TEVIS, LAVETTA
2-4	50.0%	11-24 45.8%
		3 pt 23 ft Right Angle Jump shot by GRIFFIN, AMY
2	5	Assist by TEVIS, LAVETTA
1	6	Foul on JAMES, SARAH
		Sub In: PINKERTON, M. Out: LEWIS, NIKKI

Time	Score	WOODFORD COUNTY	Player	Team
WATSON, AMY, FIELDS, TIFFANEE, REDMON, AMY, WILSON, VERNA, WASHER, TAMMY				
2 7:42	*14-15			
2 7:25	14-18*	3 pt 24 ft Left Angle Jump shot by WILSON, VERNA	2-4	50.0% 7-15 46.6%
		Assist by REDMON, AMY	1	7
2 6:49	14-20*	16 ft Circle Jump shot by REDMON, AMY	3-5	60.0% 8-16 50.0%
		Assist by WATSON, AMY	1	8
2 6:20	14-22*	4 ft Lane Turnaround by WASHER, TAMMY	3-3	100% 9-17 52.9%
		Assist by WILSON, VERNA	2	9
2 6:16				
2 5:31	*16-22			
2 4:35	16-24*	2 ft Lane Turnaround by WASHER, TAMMY	4-5	80.0% 10-19 52.6%
		Assist by REDMON, AMY	2	10
2 4:00		Foul on WASHER, TAMMY	2	8
2 4:00		Sub In: SULLINS, SUSAN Out: WASHER, TAMMY		
2 4:00	*17-24			
2 3:48		Foul on WILSON, VERNA	2	9
2 3:48				
2 3:44	*19-24			
2 3:03	*22-24			
2 2:39	*24-24			
2 2:28				
2 1:57	*26-24			
2 1:28				
2 1:19	*29-24			
2 0:59				
2 0:59				

REB: 11 A: 3 BLK: 0 TO: 5 PF: 3 S: 1 FT: 3-4 75.0% FG: 5-14 35.7% No. 1 HOLMES T I M E - O U T REB: 6 A: 9 BLK: 0 TO: 1 PF: 7 S: 2 FT: 0-0 00.0% FG: 9-17 52.9%

FIRST HALF SHOT CHART Produced by the KHSAA Sweet Sixteen Stat Crew with FINAL III - a Product of LEXICON SPORTS™



HOLMES					
Player	1-9 Ft	10-15 Ft	Over 15 Ft	3 Pointers	Total
23 - LEWIS, NIK	1 / 5	20.0%			
33 - TEVIS, LAV	1 / 3	33.3%			
40 - MCCARTHY, A	3 / 8	37.5%			
20 - JAMES, SAR	4 / 4	100.0%			
11 - GRIFFIN, A	2 / 4	50.0%			
Layups	1-9 Ft	10-15 Ft	Over 15 Ft	3 Pointers	Total
1 / 1	5 / 16	2 / 2	0 / 1	3 / 4	11 / 24
100.0%	31.3%	100.0%	0.0%	75.0%	45.8%

WOODFORD COUNTY					
Player	1-9 Ft	10-15 Ft	Over 15 Ft	3 Pointers	Total
20 - REDMON, AM	3 / 5	60.0%			
24 - HILL, ANDR	0 / 1	0.0%			
34 - WASHER, TA	4 / 5	80.0%			
12 - RAGLIN, SH	1 / 4	25.0%			
13 - WILSON, VE	2 / 7	28.6%			
Layups	1-9 Ft	10-15 Ft	Over 15 Ft	3 Pointers	Total
2 / 2	3 / 12	0 / 1	1 / 1	4 / 11	10 / 27
100.0%	25.0%	0.0%	100.0%	36.4%	37.0%